

LIBRARY GUIDE

**TI- BASE
PRIME**

C
A
D
-
C
A
M

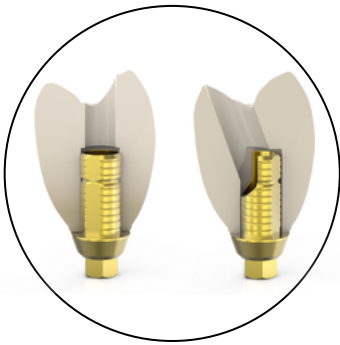
ÍNDICE

	PÁG.
1. <u>INTRODUCTION</u>	1
2. <u>LIBRARY DOWNLOAD</u>	4
3. <u>INSTALATION OF LIBRARIES IN THE COMPUTER</u>	5
4. <u>IMPORTATION OF THE LIBRARIES IN 3SHAPE</u>	6
5. <u>SELECTION OF BOOKSTORES IN 3SHAPE</u>	9
6. <u>CORRESPONDENCE TABLE</u>	10

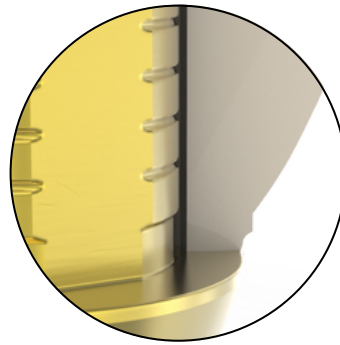
1. INTRODUCTION

Welcome to the installation and usage guide for the **Ti-Base Prime library** for **3shape** software. This guide contains the necessary instructions to effectively use the library and apply its functionalities in the process of designing cemented prostheses on our **Titanium Bases**.

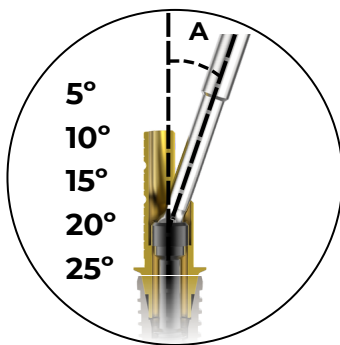
Features of the **Ti-Base Prime** library:



For **straight and angled screw channels.**



Three adjustment tolerances.



Five predefined angles.



Various gingival heights.



**Cutttable cementation
trunk.**



**For implant level and
abutment connections.**

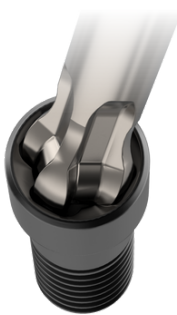
Digital Abutments

Scan Body



- **Radiopaque metal base.**
- **Sandblasted biocompatible PEEK.**
- **Captive screw** inside the abutment.
- **Perfect fit** with the original implant.
- Positioning of the **flat side** towards the vestibular side.

Dinalock® Screw



- **DLC coating** (diamond like carbon)
- Allows an **angulation of up to 25°.**
- **Maximum torque** up to **35Ncm** for any angulation.
- **Compatible** with **original screw.**
- **Greater resistance to torsion** thanks to its four-lobe system.

Digital Analogue



- For models manufactured in **3D printer.**
- **Compatible** with **original implant.**
- **Reusable.**
- The **conical pin** ensures the positioning of the analog in the model.

Titanium Prime Base



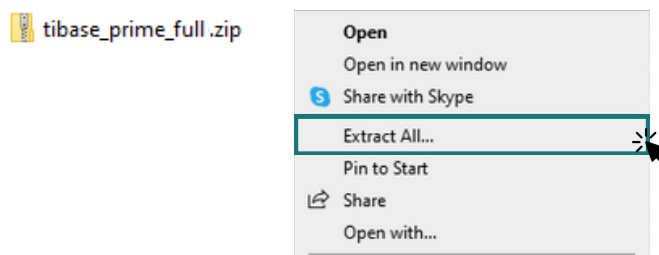
- **Grade 5 titanium** with micro-polished anodised finish.
- **Prime screw** (straight channels) or **Dinalock® screw** (angled channels) **connection.**
- For **single and multiple jobs.**

2. LIBRARY DOWNLOAD

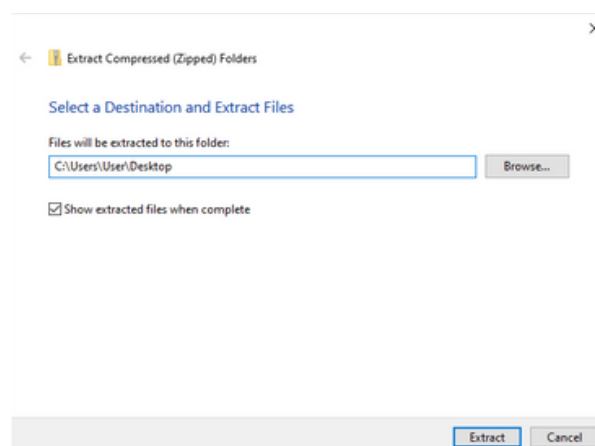
1. Click on the "3shape" icon and a ".zip" file will be downloaded.



2. Extract the downloaded library folder ".zip" - right button - "Extract all..".



3. Select a **temporary** place to save the complete library (recommendation: Desktop).

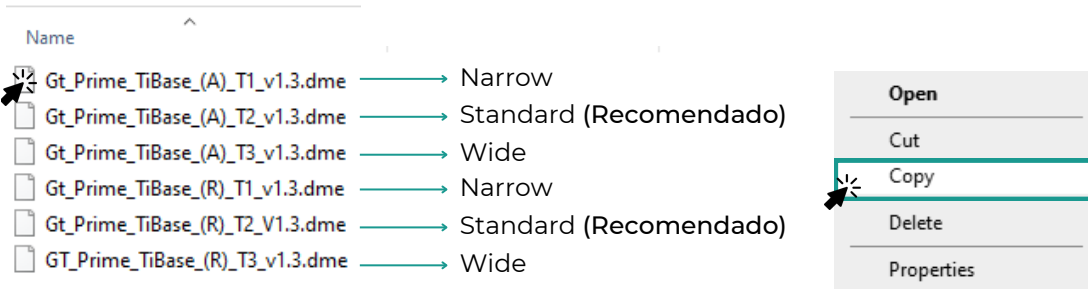


3. INSTALIATION OF LIBRARIES IN THE COMPUTER

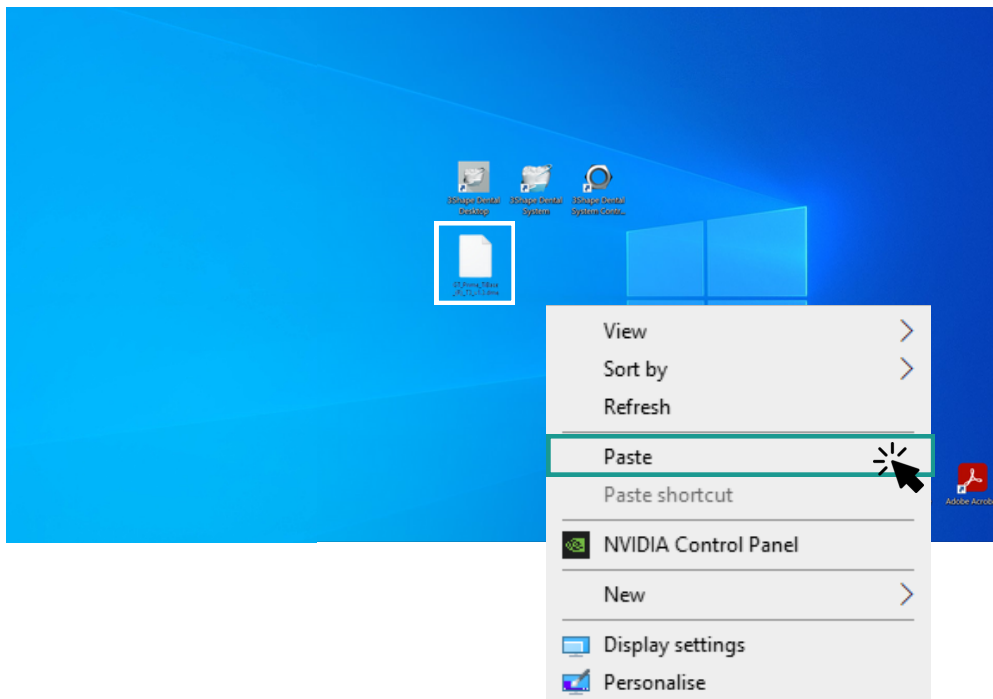
1. Select the folder "*Tibase_prime_3shape*"



2. Copy one of the files, depending on whether it is angled (A) or straight (R), and the type of tolerance/offset.

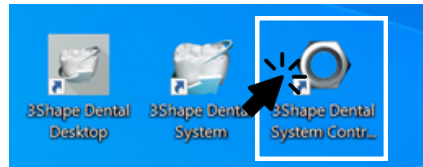


3. Paste the copied file on your desktop:

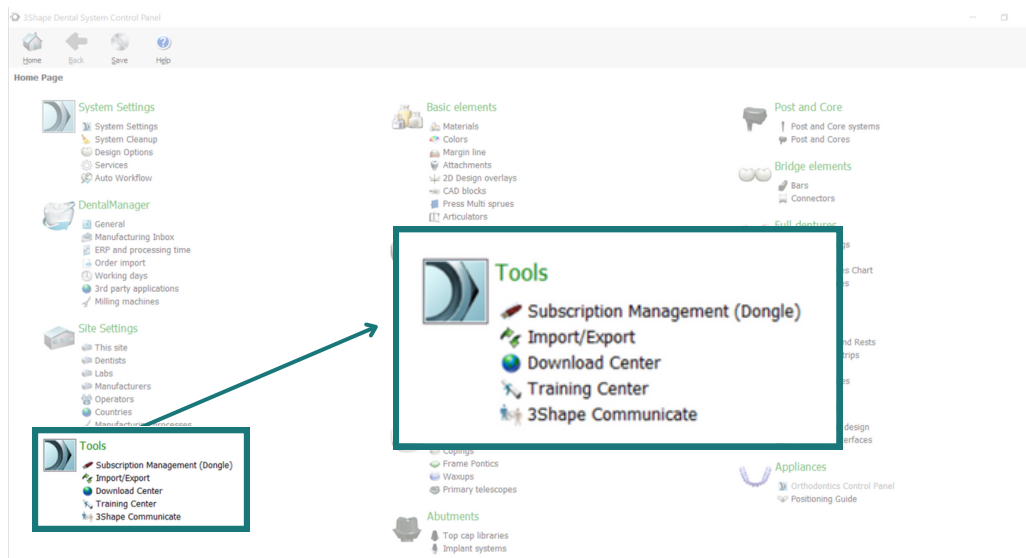


4. IMPORTATION OF THE LIBRARIES IN 3SHAPE

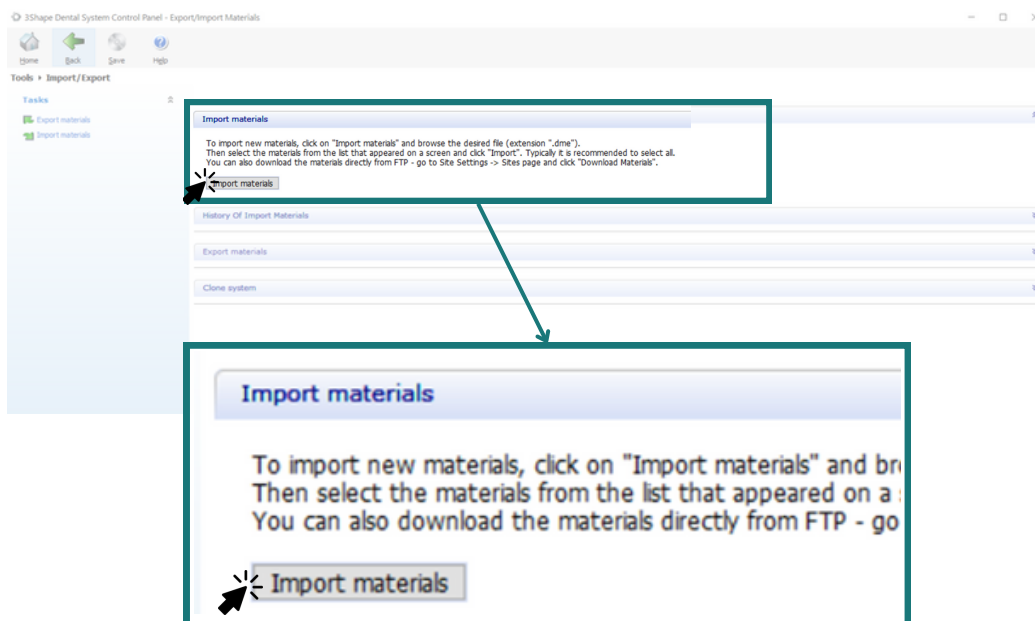
1. Open the program "3Shape Dental System Control Panel"



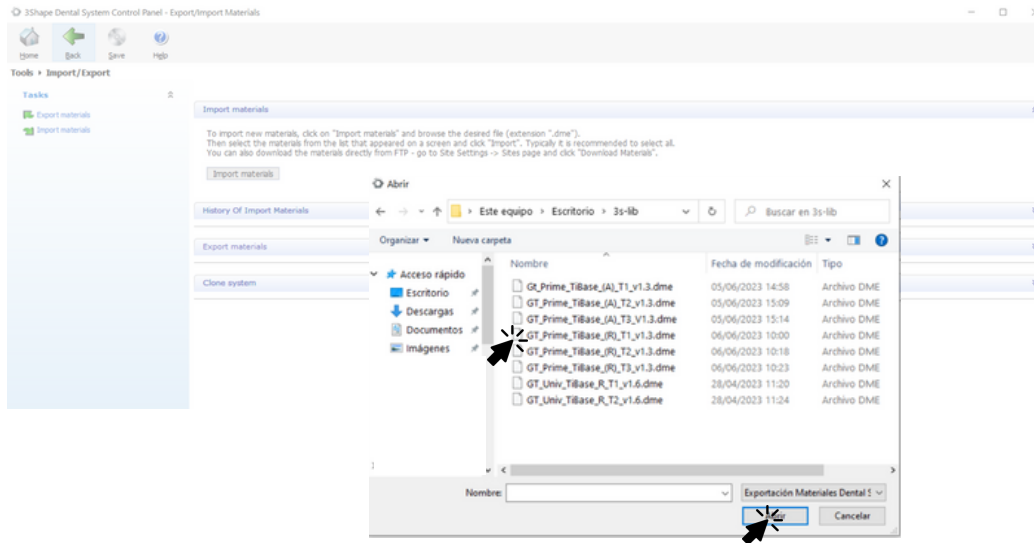
2. Select in the "Tools" section —> "Import/Export"



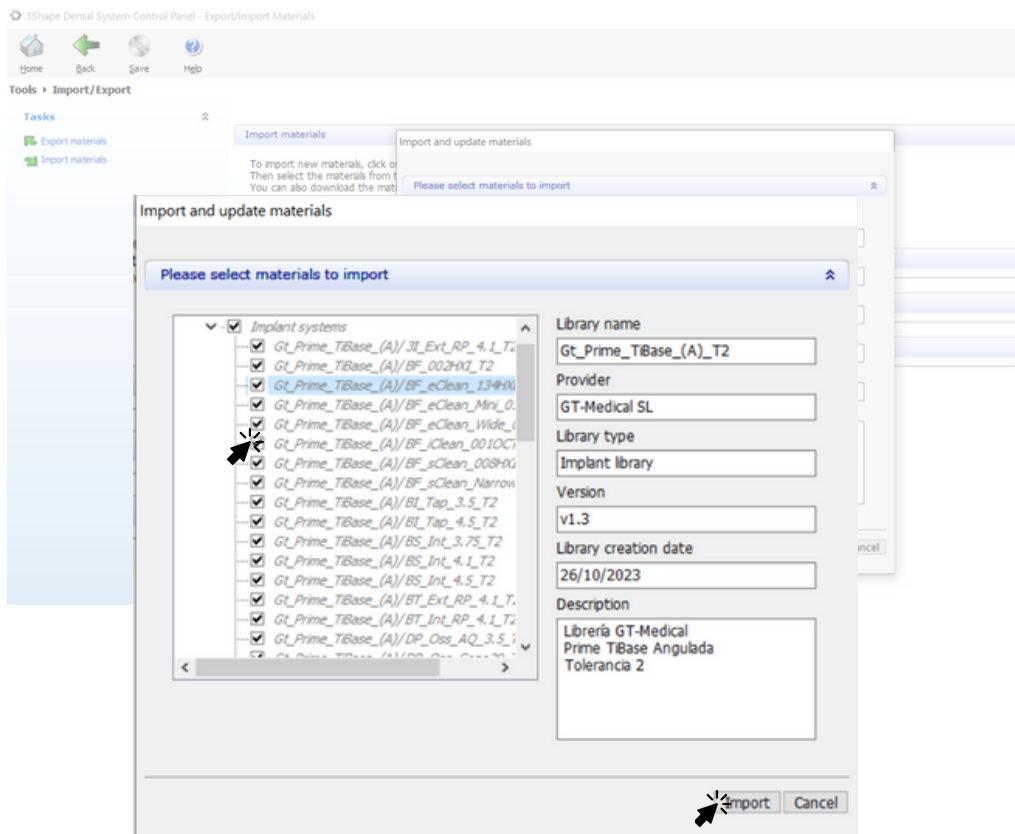
3. Select the "Import materials" box.



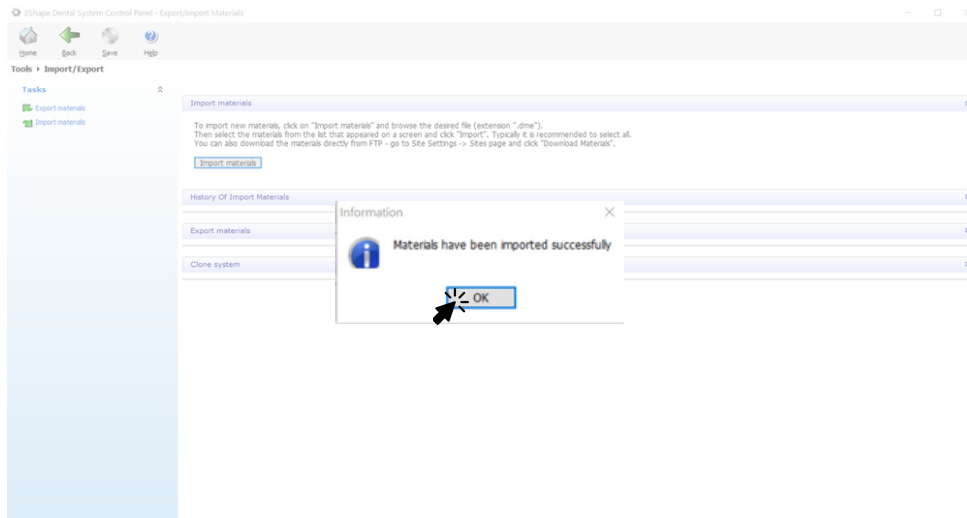
4. Select the file previously pasted to the desktop location (This computer > Desktop).



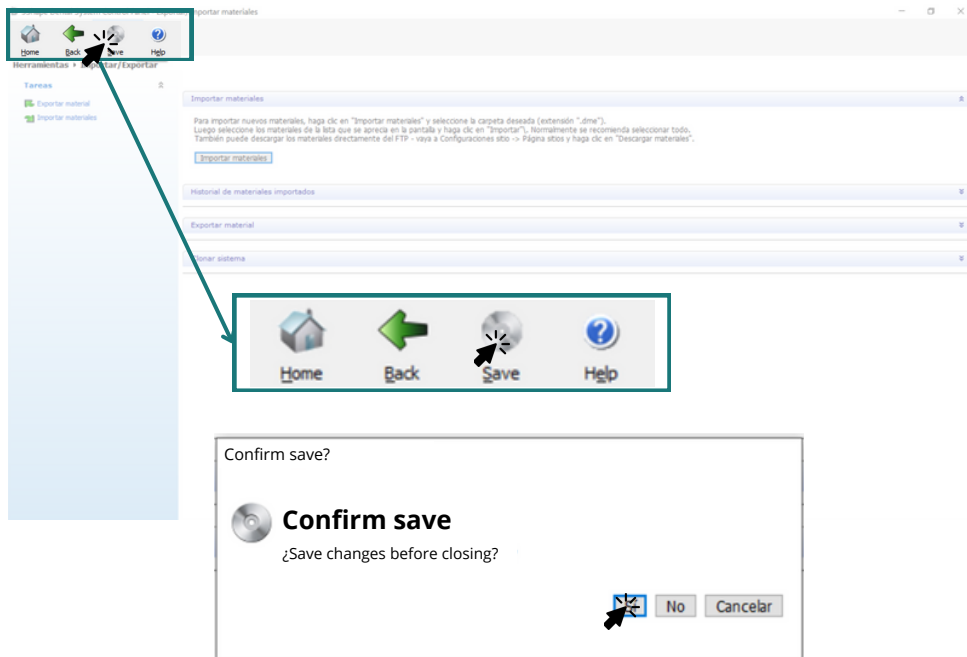
5. Select under "Implant system", the implant brand and the platform type, according to the following table:

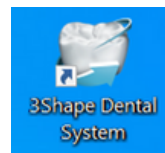


6. Verify that the materials have been exported correctly.



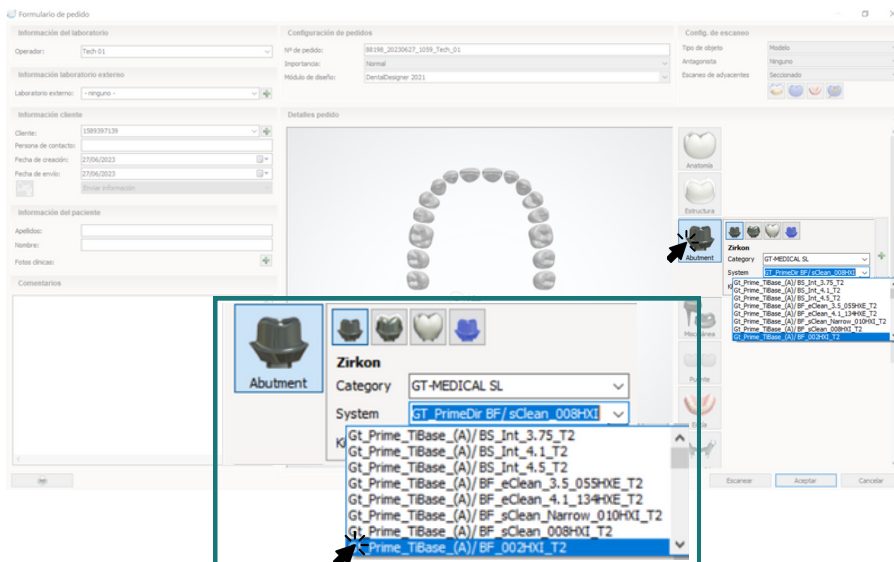
7. Save the changes made.



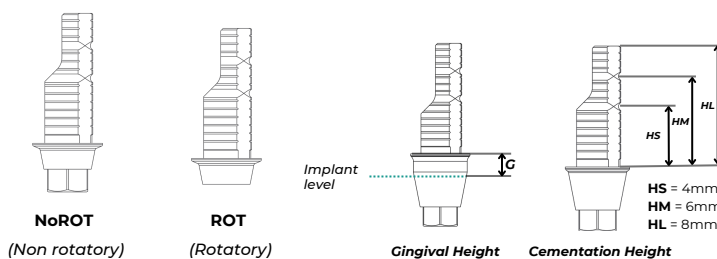
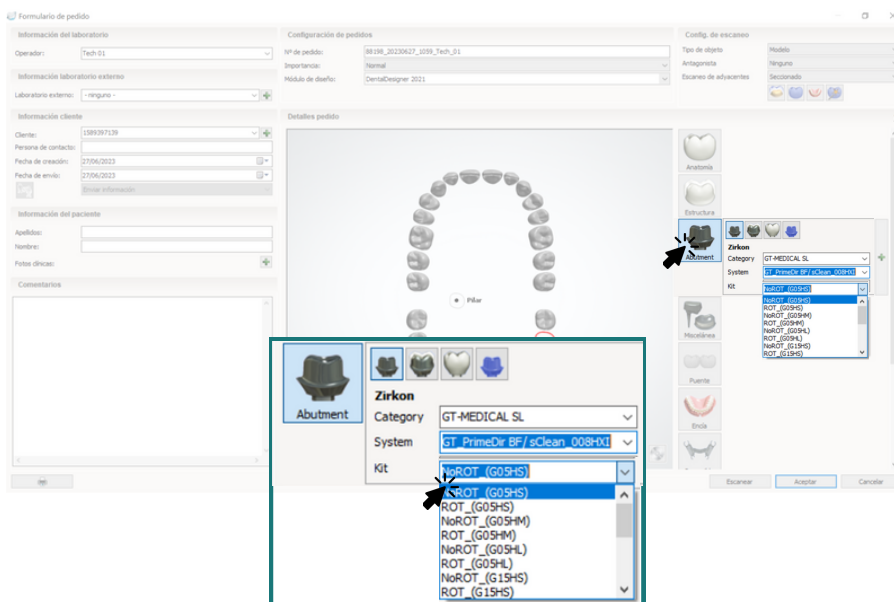


5. SELECTION OF THE LIBRARIES EN 3SHAPE

1. Select in the side section "Abutment", the implant mark and platform in "System", according to the table on the last page.



2. Select the type of work: ROT (rotary)/NoROT (non-rotary), together with the gingival height (Gx) and the cementation height (Hx).



BRAND	BRAND ABBREV.	IMPLANT/ PLATAFORM	PLATFORM ABBREV.
Bego Semados®	BS	Internal 3.25 y 3.75	Int_NP
		Internal 4.1	Int_RP
		Internal 4.5	Int_WP
Best Fit®	BF	External 3.5 (055 HXE)	055HXE
		External 4.1 (134 HXE)	134HXE
		Internal 3.0 (010 HXI)	010HXI
		Internal 4.0 (008 HXI)	008HXI
		Internal TSV® 3.5 (002 HXI)	002HXI
		Internal Octogon 4.8 (001 OCT)	001OCT
Biohorizons®	BI	Tapered 3.5	Tap_NP
		Tapered 4.5	Tap_RP
Biomet 3i®	3i	Externa 4.1	Ext_RP
Bti®	BT	External Universal® 4.1	Ext_RP
		Internal Universal® 4.1	Int_RP
Dentsply®	DP	Astra® OsseoSpeed® 3.0 Yellow	Oss_TP
		Astra® OsseoSpeed® 3.5/4.0 Aqua	Oss_NP
		Astra® OsseoSpeed® 4.5/5.0 Lilac	Oss_RP
		Cone Astra® Ossp. 20 degrees	Oss_Conos20
GT-Medical®	GT	Universal External 4.1	134HXE
		Universal Internal TSV® 3.5	002HXI
Klockner®	KL	Vega® MV 3.0	Veg_MV
		Vega® NV 3.5	Veg_NV
		Vega® RV 4.0	Veg_RV
Megagen®	MG	AnyRidge®	AnyR
Mis®	MS	Seven® Internal Standard ø3.5	Sev_NP
		Seven® Internal Wide ø4.5	Sev_RP
Nobel Biocare®	NB	Branemark® NP	BR_NP
		Branemark® RP	BR_RP
		Active® NP	Act_NP
		Active® RP	Act_RP
		Multi-Unit® RP	MU_RP
Straumann®	ST	Tissue Level RN®	RN
		Bone Level NC®	BL_NC
		Bone Level RC®	BL_RC

Sweden & Martina®	SW	External Outlink2® ø3.75/4.10 y 5.0	Ext_RP
		Int. 3.3 Prama®, Premium One®, Kohno One®, Shelta®	One_33
		Int. 3.8: Premium One®, Kohno One®	One_38
Zimmer®	ZM	Zimmer TSV® 3.5	TSV_NP
		Zimmer TSV® 4.5	TSV_RP

All trademarks mentioned are the property of their respective owners.

C
A
D
-
C
A
M

LIBRARY GUIDE

TI- BASE PRIME

rev.: nov/2023

